

IZABEL LAM

The Soft Art
Of Living™

New York in the mid-1970's was the ideal milieu for a young fashion designer Branching off into her own design label, Lam became known for using natural materials in unexpected ways—weaving strips of leather into a tunic, for example. Always, there was a sense of the solid being transformed into something supple and fluid. *Discovery Hong Kong*



Below: For the first time you notice the spheres, tens, no hundreds of them, each perfect, each different, each in its own planetary orbit. It's a golden solar system. Right: Suddenly, the luxuriant hair streams outward from the Asian face. The magic of Manhattan wells up around her East meets West in the sphere of Izabel Lam.





Lam's link with fashion is encoded in the drapes of a diaphanous,

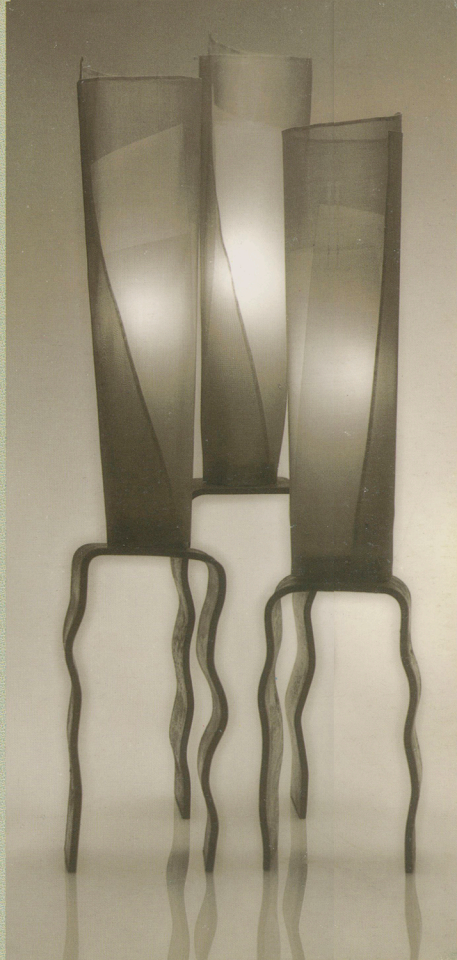
mesh-like fabric on a series of metal shades for her lamps.

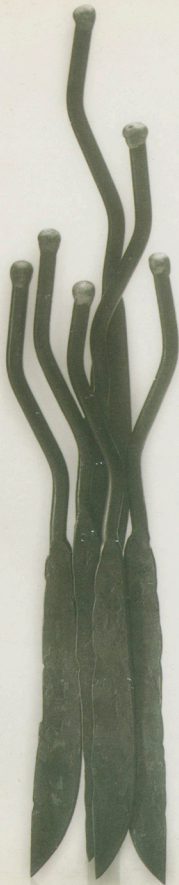
Gentle folds are carefully held in place by a single metal pin.

Chicago Sun Times

Right: Elegantly simple, the fluted silhouettes are mystically transformed into ambient beacons of light in The Mitre Lamp.

Left: Touched by the setting sun, The Visor Sconce and friends bask in the warm pool, fulfilling the promise of Izabel Lam's Aquatic Expressionism.





Whether she is designing jewelry, clothes or objects for her home collection, Hong Kong-born Isabel Lam, employs a sensual, ethereal vocabulary; her flatware seems to transcend its earthly elements. *House and Garden*, New York

Left: Reaching for the ocean's edge, the floating Spiree Letter Opener is monument to the liquid inspiration that was to become Isabel Lam's table art.

Right: The exuberant expression of the artist's will: streams of silver Banquet Napkin Rings whirl in celebration around the crescendoing Sphere cutlery.

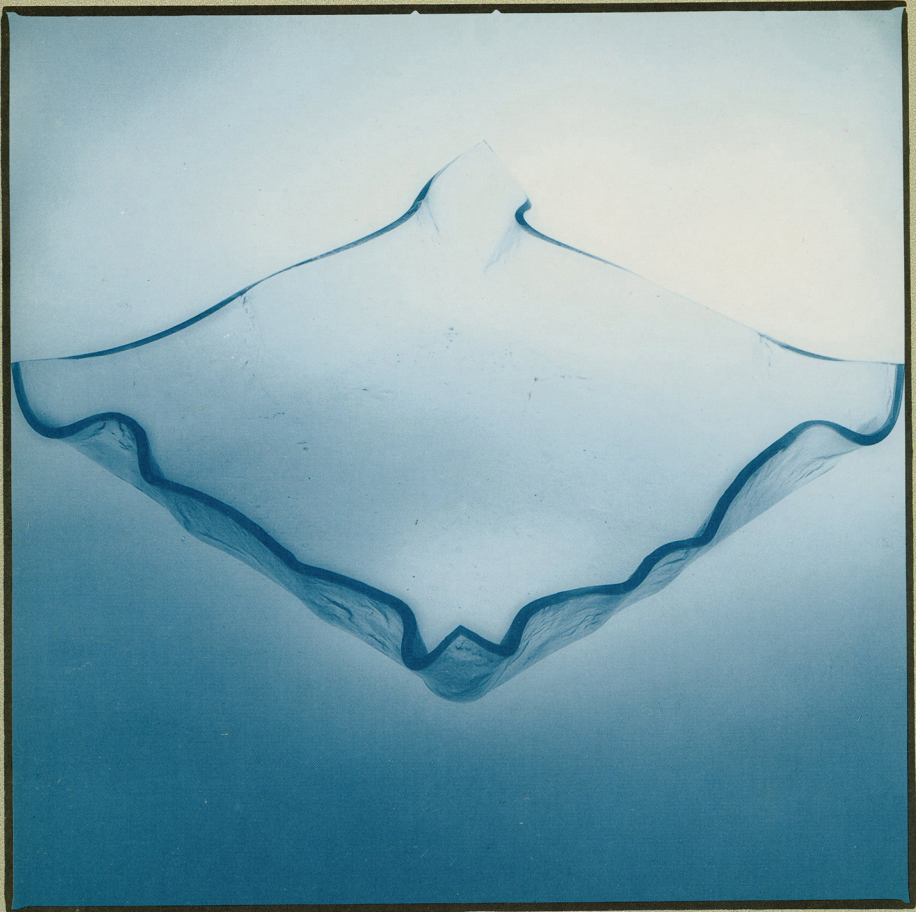


Now, Izabel Lam is coordinating different kinds of art: interior art, this can change daily life to art; the jewel, this enervates the body by art; the art of light, perhaps the most important of all, because it is the art of reflection. By using only materials from nature, she makes us feel a fresh wind of creation. *High Fashion, Tokyo*



Left: Bursting from within, the fiery earth meets the cooling sea to become The Volcanic Shore Mirror Frame. Right: Storm over, the afternoon breeze swirls over the calm surface and is captured, for single moment, in the molten Wind over Water Glass Dinnerware.





Izabel Lam's work is characterized by movement. As a scuba diver, she is enthralled and inspired by the exotic scenes she encounters under water. Beneath the waves the movement is all undulation and light. *The Nation*, Bangkok

Right: The beginning of a long wave for the artist: Izabel Lam's original steel and glass Rampart Bud Vase swept her towards new discoveries of aquatic artistry. Left: With barely discernable movement, the majestic creature glides gracefully off the ocean's floor and into the giant Silent Shore Bowl.





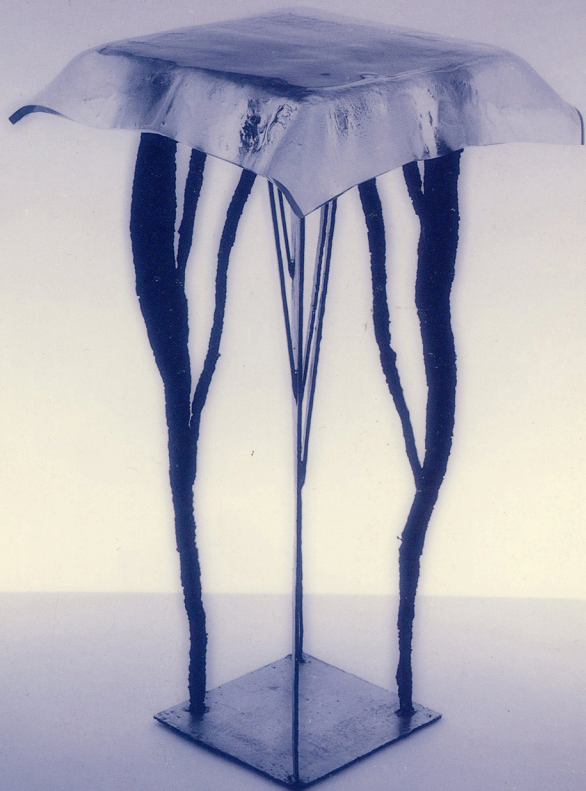
Izabel Lam's journey from clothing to sculpture is complete. She has learned to transform cold metal into warmth and softness.

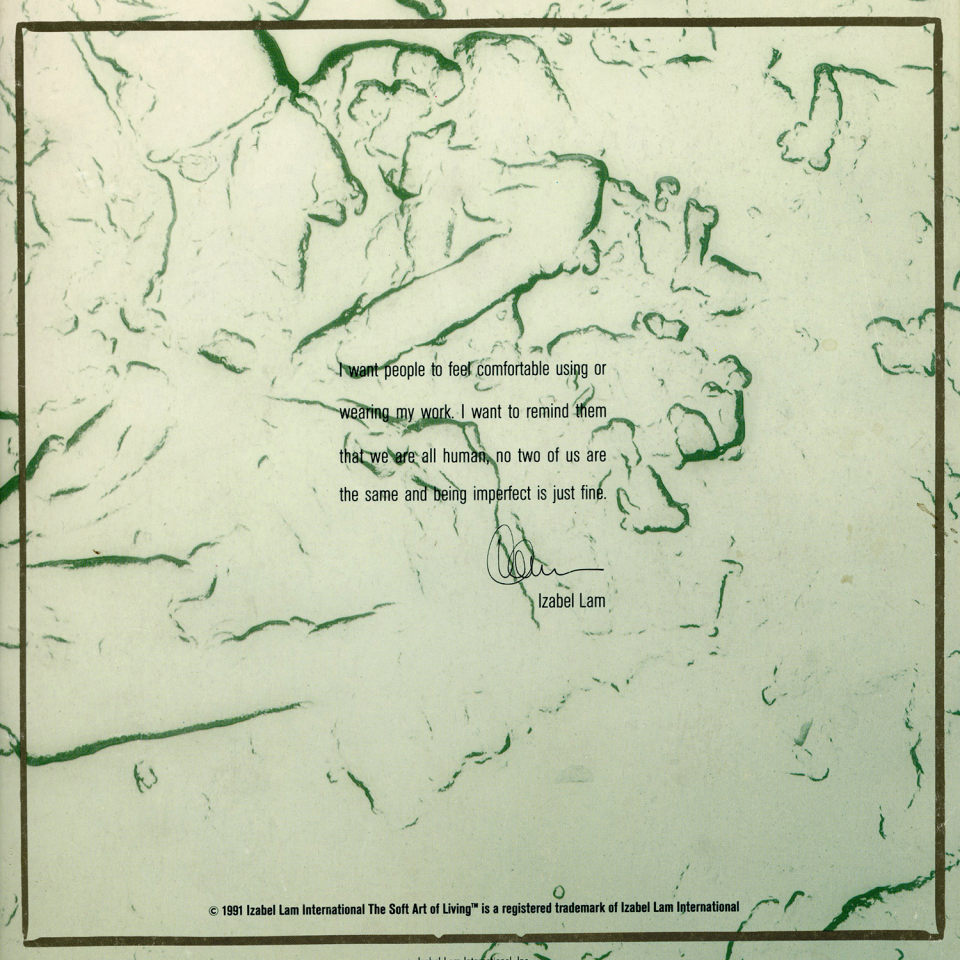
What used to be gentle folds of silk has now become delicate but strong curves in steel, bronze, copper. Glass is draped like fabric.

Look at her designs. There you see the antiques

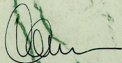
of the future. *Gap, Tokyo*

Left: First creation with tentacles of bronze and steel, this towering Cathedral Candle Holder was to provide the soft inspiration for Lam's Future Primitive style. Right: With the fusing of fire and ice into The Silent Shore Pedestal Table, Izabel Lam completes her metamorphosis from designer to artist.





I want people to feel comfortable using or
wearing my work. I want to remind them
that we are all human, no two of us are
the same and being imperfect is just fine.



Izabel Lam